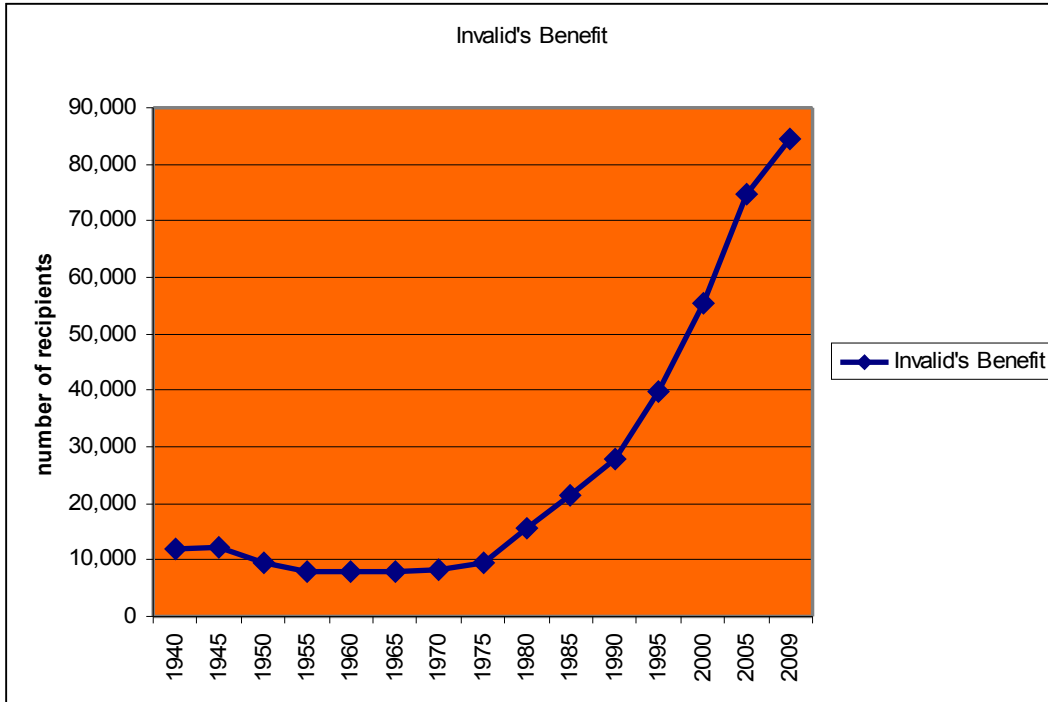


# Invalids Benefit Growth

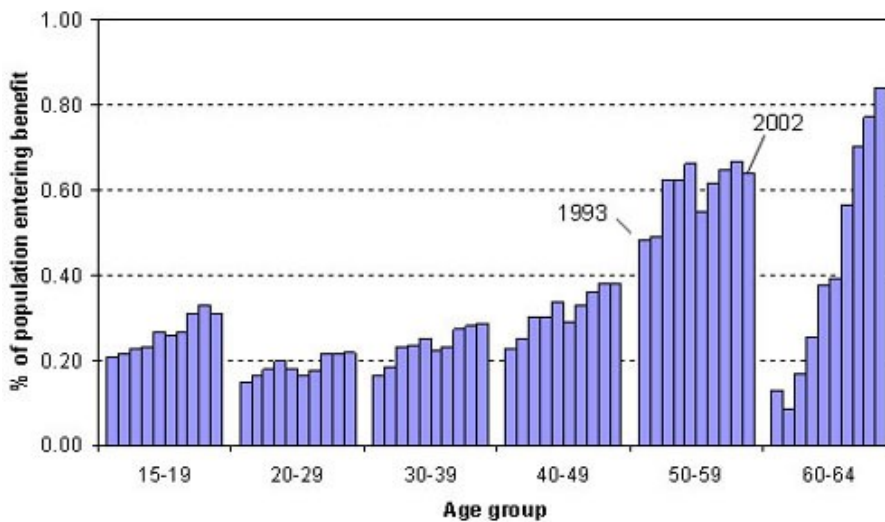


On inception, there were two requirements for the receipt of an Invalid's Benefit. The first stated the recipient must be of good moral character and sober habits and the second, that incapacity for work must not be self-induced. The first disappeared in 1966 and the second in 1970.

Today 3 in 100 working-age people relies on an invalid's benefit. The leading primary incapacity, as with the sickness benefit, is psychiatric or psychological conditions.

The rapid growth in numbers is commonly attributed to the ageing population but Ministry of Social Development research found;

“...half the growth in inflows is explained by an increase in the proportion of people aged 15–59 who came on to Invalid's Benefit each year.”



Source; <http://www.msdc.govt.nz/about-msdc-and-our-work/publications-resources/journals-and-magazines/social-policy-journal/spj29/understanding-the-growth-29-pages127-145.html>